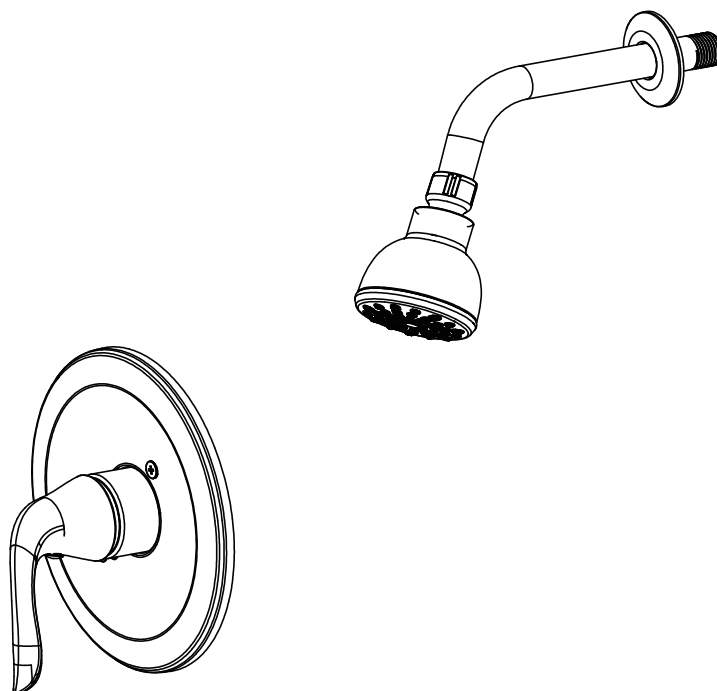


## Installation Instructions

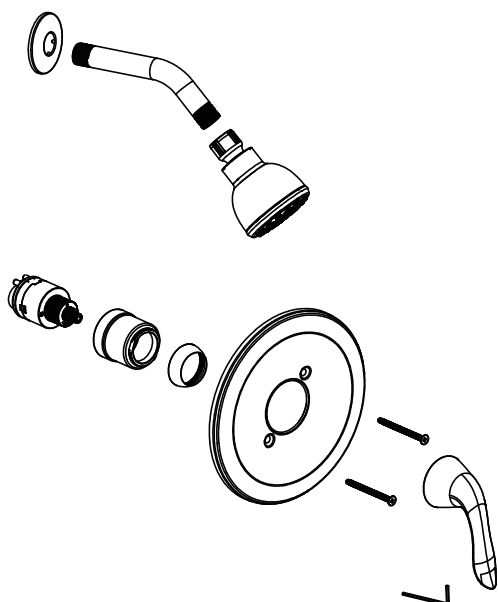


**S33STK15G3**

### BEFORE INSTALLATION

Shut off water supply.

Check to make sure you have the following parts indicated below:



### NECESSARY TOOLS

You will be using the following tools indicated below:



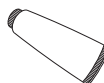
Soft Groove  
Point Pliers



Philips  
Screwdriver



Thread  
Tape



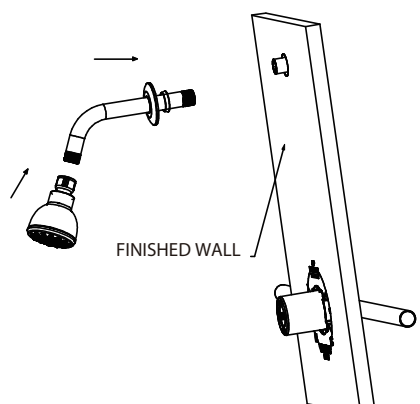
Silicone  
Sealant

### SAFETY TIPS

- If you use soldering for the installation of the faucet, the seats, cartridges and washers will have to be removed before using flame. Otherwise, warranty will be void on these parts
- Cover your drain to avoid losing parts
- When installing flexible hose, there should be no torsion or deformation; **DO NOT** fold into V or L shape; **DO NOT** use if there are any cracks or deformations.

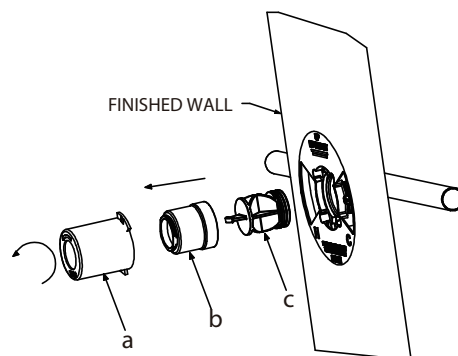
**NEED HELP?** For customer service and warranty information please visit [stream33.com](http://stream33.com)

1



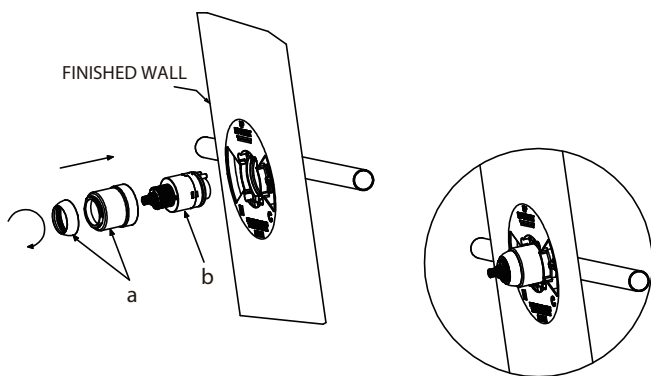
- 1) Wrap shower arm threads with thread tape.
- 2) Slip the flange over the shower arm and install the shower arm onto shower water supply on the wall.
- 3) Thread shower Head onto the shower arm, do not over tighten.

2



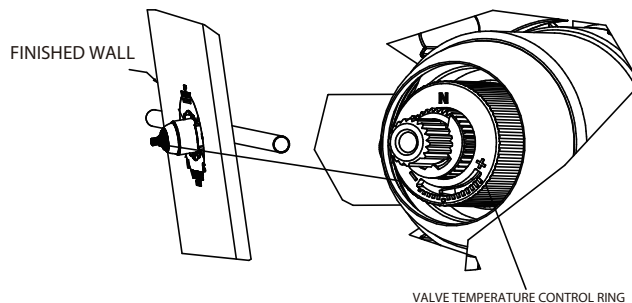
Unscrew plastic sleeve (a) and lock nut (b) and remove plug (c).

3



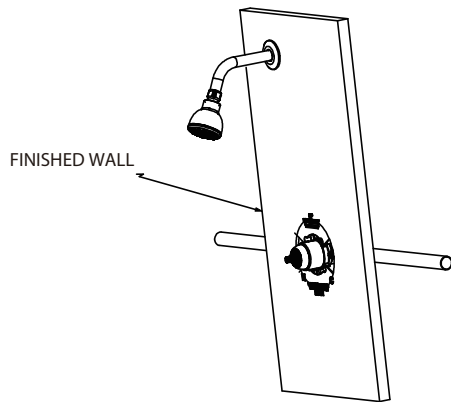
- 1) Insert the cartridge assembly (b) into valve.
- 2) Thread on decorative nut and cover (a).

4



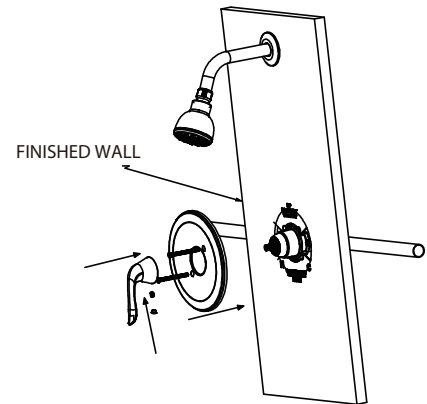
- 1) Adjust the cartridge temperature control ring per maximum desired temperature.
- 2) Turn water supply back on.

5



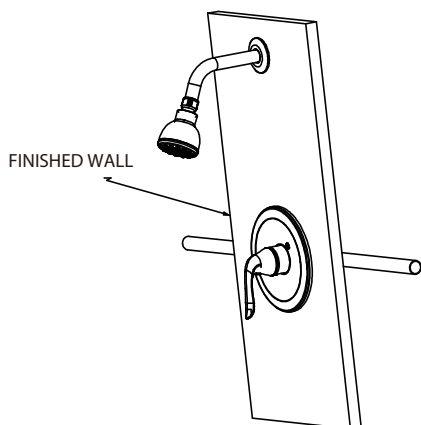
Turn the cartridge to open the water supply and check for leaks at all connection points.  
Be sure to check function of tub spout diverter plug.

6

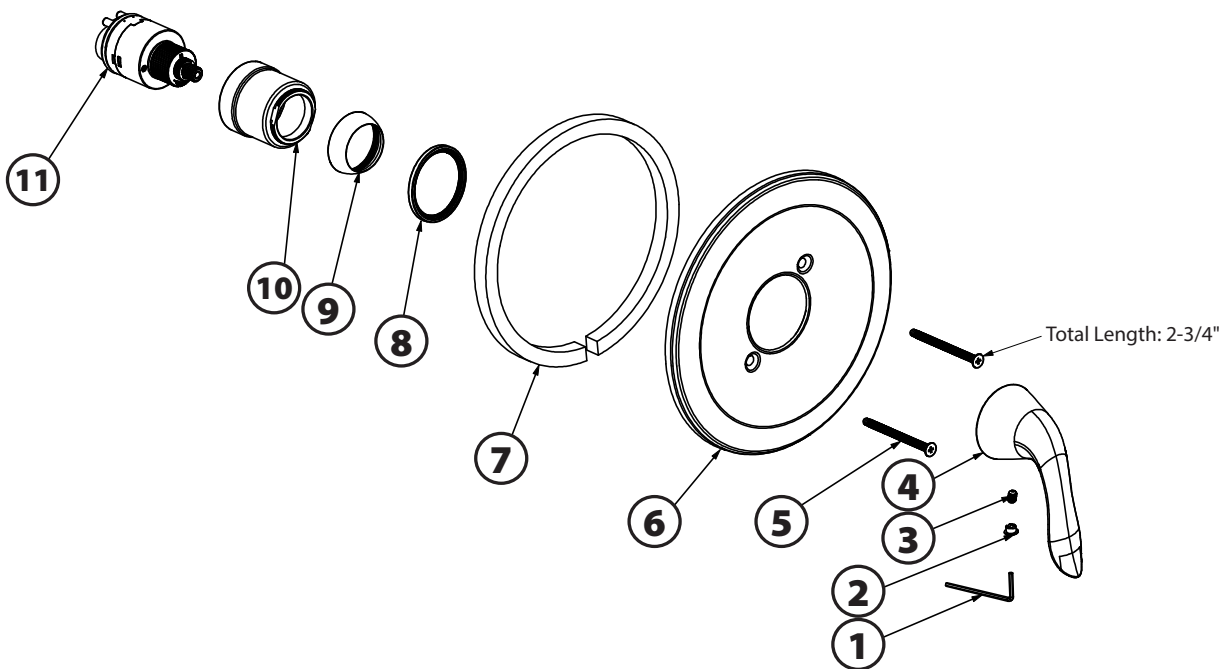
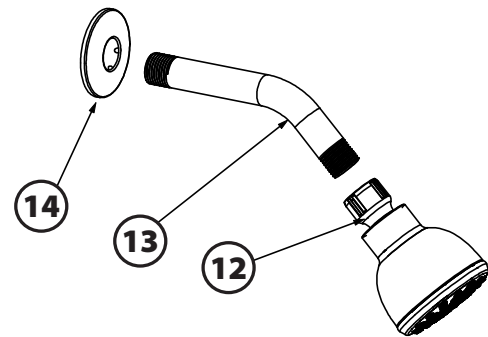


- 1) Install the escutcheon over cartridge assembly and onto the finished wall, secure with the 2 provided screws.
- 2) Install the handle onto cartridge and tighten set screw.
- 3) Apply a silicone bead around escutcheon.

7



Check that the function of the handle is smooth, the water performance is acceptable and insure there are no leaks.



Part #	Replacement Part	Name
1	999910101738	Hexagon Wrench
2	999910101773	Cover
3	C5X8X03M	Screw
4	111340211012	Handle
5	CO_190UNC24X2_756X01	Screw
6	111340081003	Escutcheon
7	111340081009	Washer
8	111340211018	Washer
9	999910101218	Cover
10	111340211001	Nut
11	F40X44_4X01	Cartridge Assembly
12	111020800012	Showerhead
13	111050101011	Shower Arm
14	BG-001	Flange



## **WARRANTY**

Stream33 Products LLC (Stream33) warrants to the ORIGINAL CONSUMER PURCHASER that its Faucets shall be free from defects in material and workmanship under normal use and service FOR A LIMITED LIFETIME WARRANTY. This warranty cannot be transferred - it is extended only to the original Purchaser or First User of the Product. By accepting and keeping this Product you agree to all of the warranty terms and limitations of liability described below.

Stream33's obligations under the warranty set forth above shall be to replace any Stream33 Faucet which is defective.

## **WHAT IS NOT COVERED?**

The warranty above does not cover and Stream33 is not liable for, (i) installation, (ii) any labor charges, (iii) use in any non-residential application, including business, commercial, and industrial usage, (iv) reasonable wear and tear or (v) products which have been damaged as a result of any accident, misuse, abuse, neglect, improper installation or maintenance, the use of steel wool, abrasive or organic solvent cleaners, modification, failure to use the Faucets in accordance with instructions provided by Stream33.

## **HOW TO OBTAIN WARRANTY SERVICE**

Contact our warranty department at 740-314-1277 to report the defect. Return failed product with proof of purchase, your name, and address within 30 days of failure to:

Stream33 Products LLC  
350 Courtney Road  
Sebring, Ohio 44672 USA

## **LIMITATION OF LIABILITY**

Stream33's liability on any claim of any kind, including, without limitation, warranty, negligence and/or breach of contract, shall in no case exceed the purchase price paid by the Customer. IN NO EVENT SHALL STREAM33 BE LIABLE FOR ANY SPECIAL, INCIDENTAL, CONSEQUENTIAL (INCLUDING, WITHOUT LIMITATION, DAMAGE TO PROPERTY) OR PUNITIVE DAMAGES, DAMAGES IN THE NATURE OF PENALTIES OR SIMILAR OR RELATED DAMAGES OF ANY KIND.

## **DISCLAIMER OF WARRANTIES**

STREAM33 EXPRESSLY DISCLAIMS ALL WARRANTIES, EXCEPT AS EXPLICITLY STATED HEREIN, TO THE FULLEST EXTENT PERMITTED BY LAW, WHETHER WRITTEN, ORAL, EXPRESS OR IMPLIED, INCLUDING ANY WARRANTY OF PERFORMANCE, MERCHANTABILITY, FITNESS FOR A PARTICULAR PURPOSE, AND NONINFRINGEMENT. THIS DISCLAIMER INCLUDES ANY ORAL WARRANTIES OR REPRESENTATIONS MADE OR IMPLIED BY ANY AGENT, EMPLOYEE, SUBCONTRACTOR, MANAGER, DIRECTOR AND/OR REPRESENTATIVE OF STREAM33.